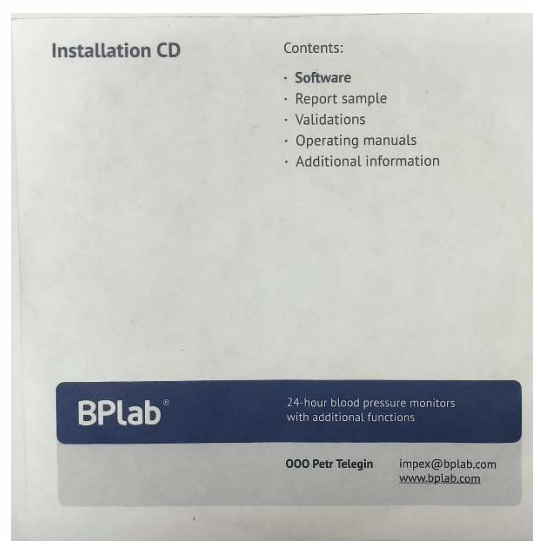


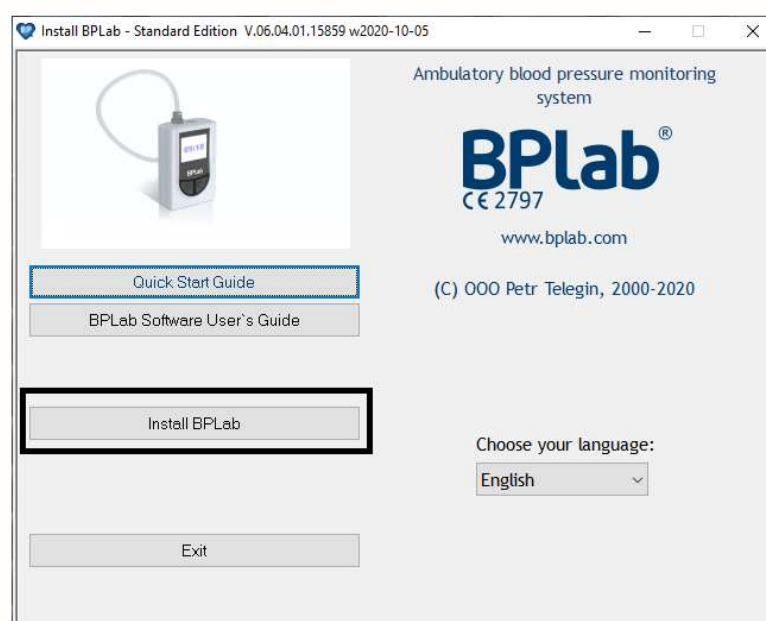


Quick User Guide – BPLab Standard Software Installation

Insert the CD that is included with the monitor kit.

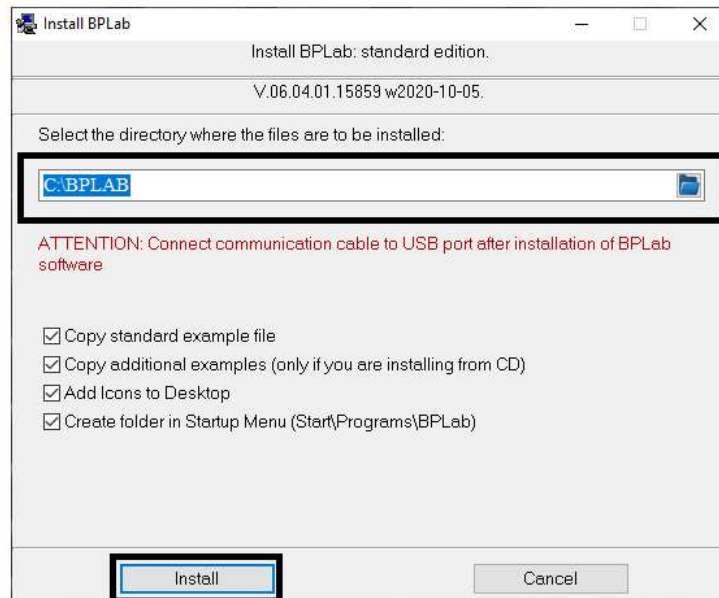


It will autorun and you will see the below screen. Click on install BPLab.

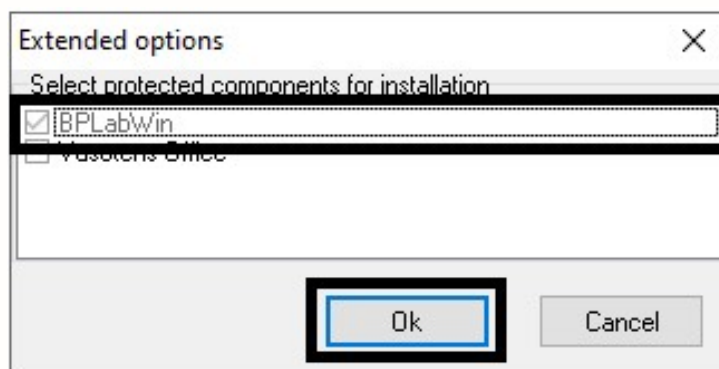




It will then take you to the next screen where you can specify the location and then click install.

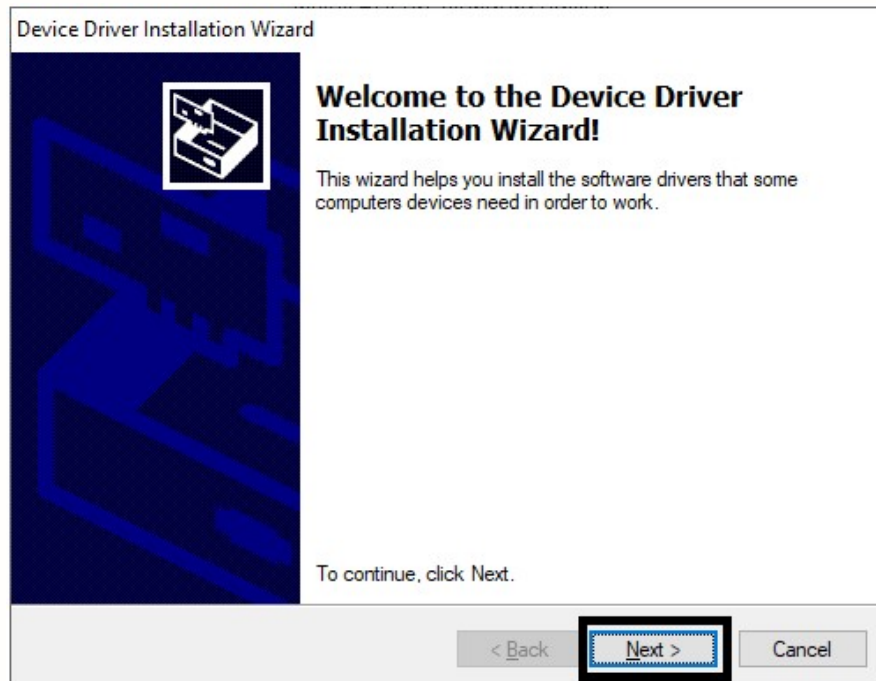


Ensure BPLabWIN box is ticked and click ok.

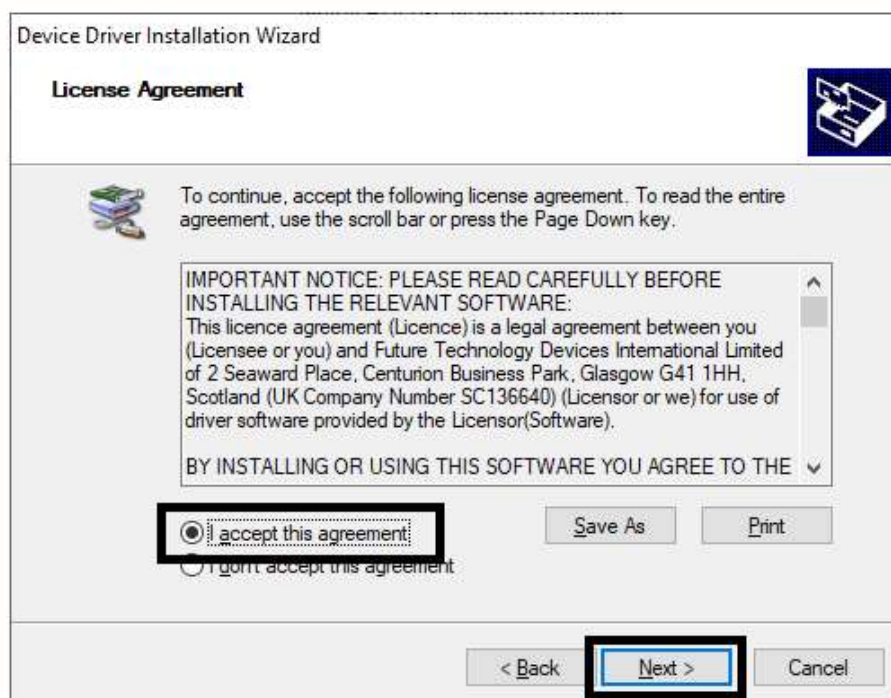




It will then open the device driver install window. Click next.

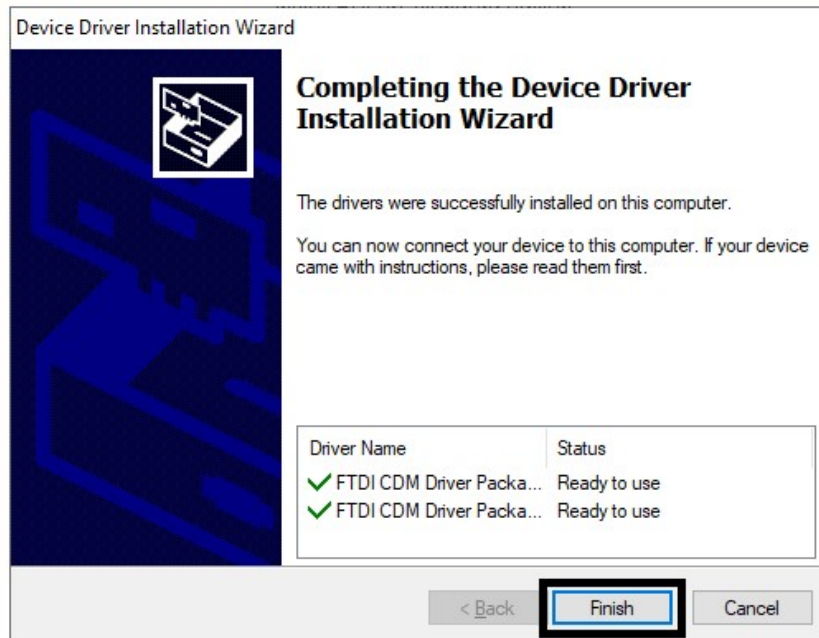


Click I accept this agreement and click next.





Click Finish to complete driver installation.



It will then take you to the finish screen for the software installation process. Click exit to close.

